

A Partner that Supports Manufacturing in Japan

ALTECH

Sumitomo Irifune Bldg 2F, 2-1-1 Irifune, Chuo-ku, Tokyo 104-0042, Japan
TEL: +81-3-5542-6760 / FAX: +81-3-5542-6767

<http://www.altech.co.jp>



ALTECH

C O M P A N Y P R O F I L E



We are working on **improving corporate value** towards the realization of a sustainable society

Toshishige Ikeya, President & CEO

The Altech Group was founded in 1976 and positioned itself to focus on two types of business: a trading business that handles various types of industrial machinery such as printing and wrapping equipment and the preforms business that mainly manufactures preforms for PET bottles and both in Japan and internationally.

In the uncertainty of the global economy that changes at a dizzying pace, corporations are expected to consider the environment and make active progress with sustainability management that places emphasis on social responsibility.

By utilising various commercial rights and information synergy cultivated over its long history as a part of management strategy, the group increased its competitive strength and is working on the sustainable improvement of corporate value.

Further, in order to realise management that is conscious of capital costs and share prices, the group has now analysed the current state of PBR in terms of three elements: performance, investor relations and finance, and has set quantitative targets for improving PBR. Implementation measures to realise these targets include formulating a value creation story, formulating a mid-term management plan for the next term, and formulating initiatives to realise human capital management and employee training policy. These implementation measures and the progress made is regularly published and we build relations of trust by actively engaging with our investors.

We will further upgrade and reinforce the sales, proposals and technological abilities that it has cultivated up until now, and we are working on further expanding our existing businesses and quickly developing new businesses.

We very much appreciate your continued support and understanding.



Toshishige Ikeya
President & CEO

OUR VISION

Deepening our bonds with our customers,
constantly venturing into new frontiers,
mastering our industry with broad expertise,
and contributing to society as a value-creating company.



We are a specialized trading company that imports the most advanced machinery and equipment from Europe and the United States to support Japanese manufacturing

Altech started out by introducing industrial machinery and equipment in the printing and packaging industries that incorporated the most advanced technology in Europe and the United States, then it expanded the products fields it dealt with in accordance with changes in the market environment and diversifying customer needs.

Now we have added a wide range of machinery and equipment to our lineup of products, including equipment related to IC cards and RFID tags, nanotechnology-related equipment, plastic/rubber molding machines, 3D printers, pharmaceutical filling equipment, food processing machinery, cosmetics-related equipment, water treatment equipment, logistics system and service robots.

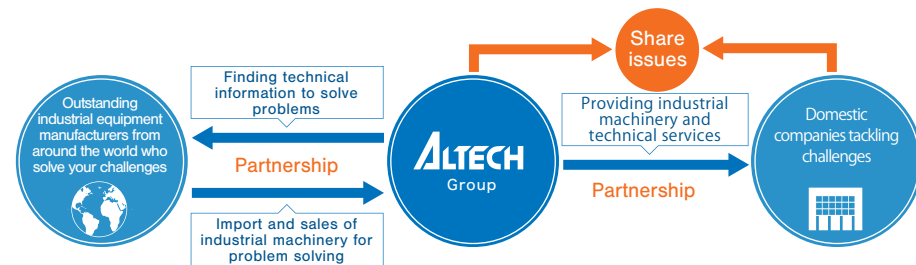


Headquarters (Chuo-ku, Tokyo) Osaka business Office (Kita-ku, Osaka-shi) Technical Division (Koto-ku, Tokyo) ALTECH ASIA PACIFIC CO.,LTD. (Bangkok, Thailand) ALTECH ASIA PACIFIC VIETNAM CO.,LTD. (Ho Chi Minh, Vietnam) PT.ALTECH ASIA PACIFIC INDONESIA (Jakarta, Indonesia)

TRADING BUSINESS FLOW

Issues to be addressed by the company

- Reduction of environmental impact
- Rationalization of production processes
- Improved energy efficiency
- Energy saving, space saving, automation



We are a specialized manufacturer in the production and sale of preforms, the original form of PET bottles for major beverage companies.

We manufacture and sell preforms for heat-resistant PET bottles for beverages, preforms for PET bottles for aseptic filling, preforms for PET bottles for cooking oils, PE caps and other items. With four production bases in what has become the huge consumer market of China : in Suzhou, Guangzhou, Chongqing and Wuhan – and one in Fukui, Japan, we recognize the needs of the market and our customers and pursue all the possibilities of plastic molding. We will continue to provide high-quality products under the motto “cleanliness, safety and peace of mind”.

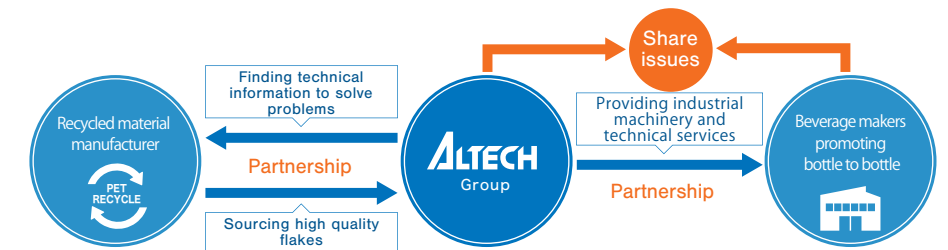


Altech New Materials Co.,Ltd. (Sakai-shi, Fukui Pref.) Altech New Materials (Suzhou) Co.,Ltd. (Suzhou, China) Chongqing Altech New Materials Co.,Ltd. (Chongqing, China) Altech New Materials (Guangzhou) Co.,Ltd. (Guangzhou, China) Altech New Materials (Wuhan) Co.,Ltd. (Wuhan, China)

MANUFACTURING BUSINESS FLOW

Issues to be addressed by the company

- Horizontal recycling
- Marine pollution of plastics
- De-plasticization
- Sustainable materials



Printing and Packaging

We offer state-of-the-art and unique equipment and solutions, including flexographic presses and laminators related to package printing, label post-processing machines, laminating for the packaging container market, plastic tube manufacturing machinery, and paper package and container forming machinery.

Test-tube shaped preforms are completed

PACKSYS GLOBAL



High end flexographic printing presses

BOBST



Dry paper forming machine

OMG



Printing and Packaging

Polymer Process

Our business fields are film/sheet manufacturers for packaging, automotive, and many other industries, which look for high-function, lightweight and environmental friendliness with polymer materials such as synthetic resin and rubber. To meet the business trends and demand which change quickly in the market, we keep proposing latest technology, products, and machinery specializing mixing, extrusion, and related process on those continuously evolved materials with our worldwide network.

Multilayer film/sheet forming machine

LABTECH ENGINEERING



Plastic recycling equipment

NGR



**High-pressure hydrogen tank
Filament winding equipment**

MIKROSAM



Mikrosam



Labtech



Altech Products

Printed Electronics

We are offering a variety of innovative systems and solutions such as ultrasonic spray and photonic sintering system and more, with a focus on some important industrial processes where our leading edge technologies, related to both nano technology and printed electronics, are typically applied; like thin film deposition, coating, curing, sintering, inspection and evaluation and so on, gathering high hopes for the future market due to their innovative and novel technologies designed to head for "next-generation".

Inkjet flying droplet observer

IMAGEPERT



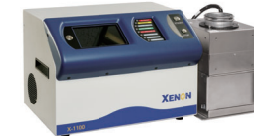
Q-CMD measuring device

BIOLIN SCIENTIFIC



**Photonic sintering/
UV irradiation curing system**

XENON



**Ultrasonic spray thin-film
coating system**

SONO-TEK



Qsense



Printed Electronics

Beverage System

We offer dies for blow molding machines used for PET bottle manufacture, leak testers, ultrasonic defoamers, and various measuring and other equipment that is indispensable in processes in which high-quality PET bottles are manufactured, to support the manufacture/production of beverage.

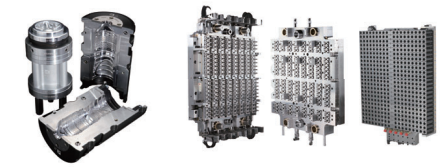
**Beverage production line
(Blowing, filling and capping integrated)**

NEWAMSTAR



PET bottle blow molds • preform molds

ALTECH NEW MATERIALS (Suzhou), GDXL



Beverage System

3D Printer

The use of 3D printers is expanding into a wide variety of fields, including automobiles, consumer electronics, toys, medicine, and research institutes. We have a wide variety of 3D printers with features such as high-definition, high strength, large scale modeling, and metal compatibility, which can be used in a wide range of applications from prototyping to final products. We also offer contract modeling services using 3D printers, and will propose products that meet your needs.

Resin 3D printer

STRATASYS



Metal 3D printer

Desktop Metal



3D Printer Output Services

Altech



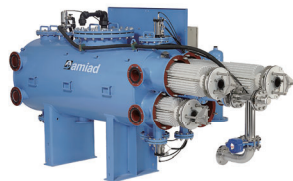
3D printer

Life Science

We import from Europe, U.S. and Asia equipment related to the manufacture of items indispensable in daily life such as food, medicines, medical care, cosmetics and water treatment, and offer it for sale. We also offer state-of-the-art technology that solves both problems related to costs and those that our customers are facing.

Water treatment equipment

AMIAD



Cosmetic filling machine

WOJUNG TECH



Pasta manufacturing machines

FAVA



AMIAD



Wwojung



Altech Products

ICT Solutions

In smart card/RFID label and e-SIM where technological innovations are continuing, we offer solutions for ID card and passport manufacturing, EMVCo credit card payment (which has become the international standard), wireless charging, and solutions that evaluate hardware security. We also offer next-generation conferencing solutions that can realize a more flexible and functional hybrid work conferencing environment while taking advantage of the benefits of traditional conferencing systems.

**IC card/RFID
manufacturing equipment**

MUEGLBAUER



**RFID tag and label
inspection equipment**

VOYANTIC



**NFC device interoperability
test equipment**

FIME



Hybrid conferencing system

CRESTRON



Crestron



ICT Solutions

Logistics System

For logistics/manufacturing worksites, the shortage of labor and manpower due to the declining birth rate and aging population, along with improvements in operational streamlining, are serious issues. We offer new labor saving and unmanned solutions specialized for optimization of logistics and manufacturing sites, in the form of service robots and automation systems that work in place of people.

AI autonomous robot

Bear Robotics 社



Automatic storage warehouse

KARDEX



Compact non-step electric bus

KARSAN



Logistics System

Preform • Cap

At Altech group manufacturing plants, we always put the customer first in preform production to ensure that our customers can use our products with peace of mind. Based on our quality control system according to ISO9001, we have realized a production system of stable quality, an inspection system that does not overlook defective products, and a clean production environment.



Various preforms



Caps



Manufacturer's products made from PET bottles molded from preforms

Preform production facilities



Altech group quality control



Quality control office

Quality control training

Dimensional measurement (mouth, wall thickness, verticality, etc.)

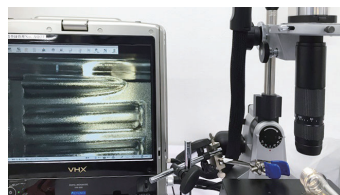
Gas chromatograph (AA value measurement)



Microbiological inspection area



Moisture value measurement



Microscope (survey analysis)



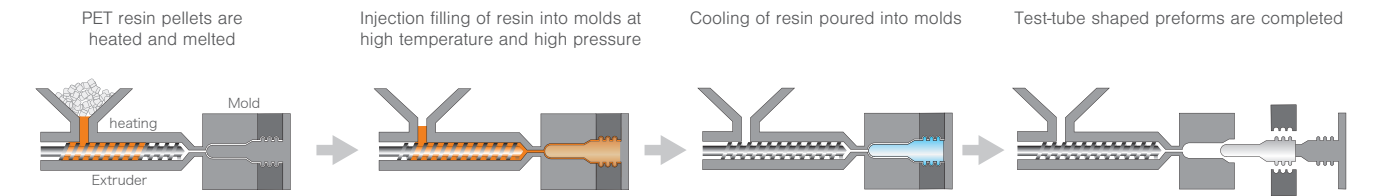
Strain test (survey analysis)



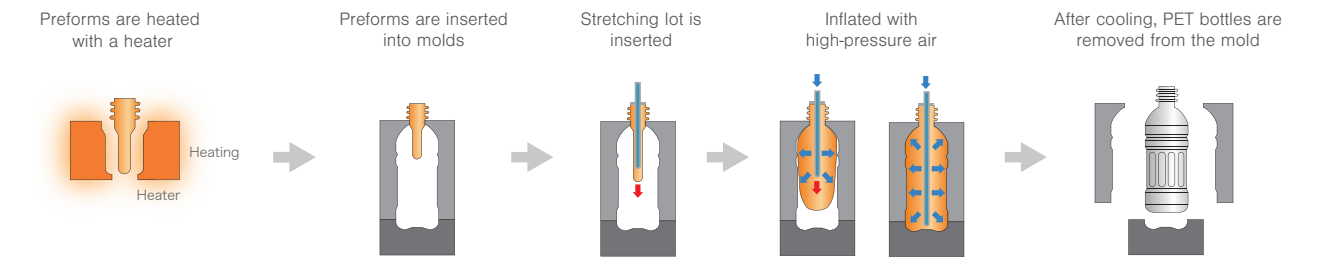
Altech New Materials

PET bottle manufacturing process

Preform molding mechanism (manufactured and sold by Altech)

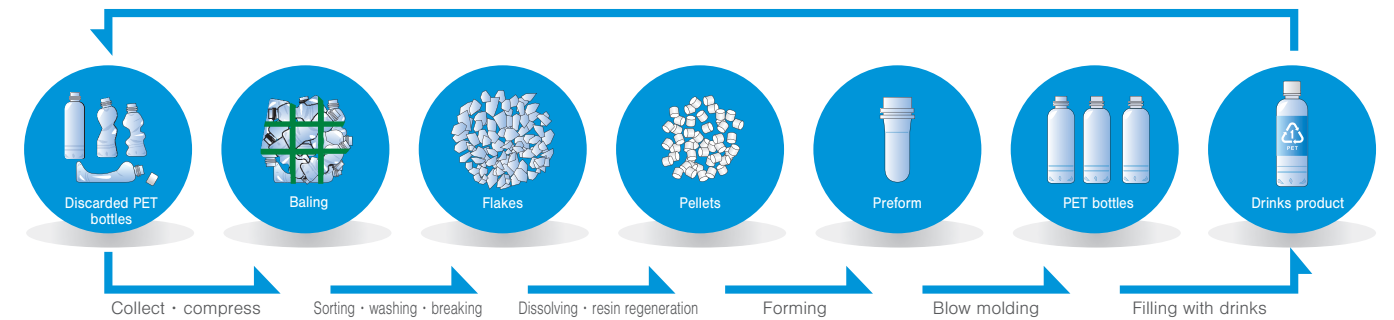


PET bottle molding mechanism (molding and filling by beverage manufacturer)



Bottle-to-Bottle Horizontal Recycling

As part of its bottle-to-bottle initiative, Altech Group has introduced advanced PET resin recycling equipment, and has started manufacturing high-quality recycled PET resin for food-grade containers using flakes of used PET bottles as the base material. We manufacture recycling preforms with our own recycled PET resin as the base material and we contribute to the realisation of a circular society by supplying drinks manufacturers.



Based on our management philosophy, Altech Group's trading and preform businesses are two halves of a whole, and we aim to realise a sustainable society with our stakeholders by actively initiatives in management that emphasises sustainability and solving various issues.

Altech Group Materiality (Important Issues)

E Environment	S Social	G Governance
Reducing the environmental burden that comes with corporate activities	Overcoming social issues through business activities	Strengthening the governance system
<ul style="list-style-type: none"> Cutting the volume of GHG emissions <ul style="list-style-type: none"> Progress in using renewable energy Streamlining production process Environmental management <ul style="list-style-type: none"> SBT Certification ISO14001 Effective Use of Resources <ul style="list-style-type: none"> Bottle-to-bottle horizontal recycling Circular Recycling of Water Resources 	<ul style="list-style-type: none"> Improve the working environment <ul style="list-style-type: none"> Childcare support Use senior citizen talent Employee education / career development <ul style="list-style-type: none"> Harassment countermeasures Health care Support for regional cultural Business model that solves issues in society 	<ul style="list-style-type: none"> Corporate governance system <ul style="list-style-type: none"> Information disclosure system Maintain an internal control system Eliminate anti-social forces <ul style="list-style-type: none"> Maintain a risk management system Compliance

Altech Group Initiatives to reduce the Environmental Burden

Using Renewable Energy	Environmental Management	Effective Utilization of Resources
<ul style="list-style-type: none"> Installation of solar power generation equipment <p>The Altech Group is installing and operating solar power generation equipment at group company preform manufacturing plants as a policy towards achieving carbon neutral by 2050. By using renewable energy, we will limit the consumption electricity generated from fossil fuel sources and progress with the reduction of GHG emissions.</p>	<ul style="list-style-type: none"> SBT approval obtained <p>Altech Group will reduce its greenhouse gas targets by 46% compared to 2019 levels (1.5°C target) by 2030.</p>	<ul style="list-style-type: none"> Bottle-to-bottle horizontal recycling <p>We develop and manufacture preforms which are molds for PET bottles for drinks bottles with recycled PET resin as the base material.</p>
<ul style="list-style-type: none"> ISO14001 Obtained <p>Altech Group obtained international standard ISO140001 certification for an environmental management system that complies with international standards in order to improve environmental performance.</p>	<ul style="list-style-type: none"> Plastic Resource Recycling <p>We provide mold testing devices such as films, sheets and fibres for all kinds of product development using recycled plastic materials.</p>	<ul style="list-style-type: none"> Circular Recycling of Water Resources <p>We provide local authorities and corporations with low-cost, high-functioning water filtration systems.</p>
 <p>Altech New Materials Suzhou Plant (6MW of power generation equipment)</p>	 <p>Altech New Materials Fukui Plant (243kW of power generation equipment)</p>	

Overview	Company Name	Altech Co.,Ltd.
Headquarters	Sumitomo Irifune Building 2F, 2-1-1 Irifune, Chuo-ku,Tokyo, 104-0042, Japan	TEL : +81-3-5542-6760
Established	May 15, 1976	
Capital*	5,527 million yen	
President & CEO	Toshishige Ikeya	
Number of Employees*	138 (Altech Co.,Ltd.) 457 (Consolidated Basis)	
Number of Affiliated* Company	13 (Subsidiaries) 2 (Affiliates)	

*as of Nov 30, 2024

Domestic Base	Osaka Business Office
	Innogate Osaka, 9F, 2-123 Umeda 3-chome, Kita-ku, Osaka-shi, Osaka-prefecture 530-0001, Japan TEL : +81-6-4580-2664 (Main) / FAX : +81-6-7635-8353
	Tokyo Technical Center Toyo-cho ML PLAZA Building 1F, 5-8 Toyo 7-chome, Koto-ku, Tokyo 135-0016, Japan TEL : +81-3-5542-6771 / FAX : +81-3-5542-6770

Domestic Group Companies	Altech New Materials Co.,Ltd.
	BAIFUN-ALTECH Co.,Ltd. Altech New Power Co.,Ltd

Overseas Group Companies	Altech New Materials (Suzhou) Co.,Ltd.	ALTECH ASIA PACIFIC CO.,LTD.
	Altech New Materials (Guangzhou) Co.,Ltd.	PT. ALTECH ASIA PACIFIC INDONESIA
	Chongqing Altech New Materials Co.,Ltd.	ALTECH ASIA PACIFIC VIETNAM CO.,LTD.
	Altech New Materials (Wuhan) Co.,Ltd.	

History	1976	Altech Co.,Ltd. was established with capital of 30 million yen at 4-5, Hatchobori 1-chome, Chuo-ku, Tokyo, with the aim to import and sell industrial machinery.
	1994	Registered stocks as an over-the-counter stock to Japan Securities Dealers Association.
	1998	Listed in the Second Section of the Tokyo Stock Exchange.
	1999	Established Alpallet Co.,Ltd.
	2000	Listed in the First Section of the Tokyo Stock Exchange.
	2002	Established Altech Asia Pacific Co.,Ltd. in Thailand. Established Altech New Materials (Suzhou) Co.,Ltd.
	2003	In line with transformation to the holding company system, divided business groups into five subsidiaries.
	2004	Established Altech New Materials (ShenZhen) Co.,Ltd. Established Altech New Materials (Guangzhou) Co.,Ltd.
	2008	Absorbed subsidiaries and introduced an operational headquarters system.
	2010	Moved the Osaka Business Office to 3-5-36 Miyahara, Yodogawa-ku,Osaka-shi, Osaka.
	2011	Established PT. Altech Asia Pacific Indonesia. Moved the Head Office to 2-1-1 Irifune, Chuo-ku, Tokyo.
	2012	Acquired ISO9001 and ISO14001 accreditations.
	2013	Established Chongqing Altech New Materials Co.,Ltd.
	2014	Alpallet Co.,Ltd. changed its trading name to Altech New Materials Co.,Ltd. Established Altech New Materials (Wuhan) Co.,Ltd.
	2015	Established Altech Asia Pacific Vietnam Co.,Ltd. in Vietnam.
	2020	Established BAIFUN-ALTECH Co.,Ltd.
	2021	Established Altech New Power Co.,Ltd.
	2022	Moved to the Standard Market due to the revision of the market classification of the Tokyo Stock Exchange.
	2025	Moved the Osaka Business Office to 3-2-123 Umeda, Kita-ku, Osaka-shi, Osaka.