

A Partner that Supports Manufacturing in Japan

# ALTECH

C O M P A N Y   P R O F I L E



Contributing to society as a value creation company by delivering our customers satisfaction beyond their expectations, through rigorous investigation of the industries and constantly taking on challenges in new areas, while taking bonding, i.e. relations of trust, with customers as the foundation of our business

The Altech Group was founded in 1976 and positioned itself to focus on two types of business: a trading business that handles various types of industrial machinery such as printing and wrapping equipment and the preforms business both in Japan and internationally.

Due to the effects of the coronavirus(COVID-19), the future of the global economy is both opaque and unstable but, on the other hand, society is heavily relying on companies to work towards a more sustainable society with the keyword being SDGs.

By exhibiting various commercial rights and information synergy cultivated over its long history, the group has made its typical strengths a reality and has achieved further improvements in corporate value.

While anticipating the rapidly changing era, we have formulated a new 5-year mid-term management plan starting in 2021.

We will upgrade and reinforce the sales, proposal and technological abilities of the company and we will progress with the necessary policies with a sense of speed to work towards the achievement of the goals set out in the plan.

We very much appreciate your continued support and understanding.



**Norihiro Chono**  
Chairman & CEO



**Toshishige Ikeya**  
President & CEO

## OUR VISION



### 【絆】 Communication

#### Course of action to deepen Communication with customers

We will get to understand customers better than they do themselves, be good consultants, and offer high-level solutions faster than was expected at consultation.

### 【究】

#### Course of action to create broad and deep knowledge about the industry

We offer value creation aimed at solving issues in the industry through thorough relationship building and information collection with the customers and manufacturers.

### 【翔】 Challenge

#### Course of action to deepen Communication with customers

We are always looking for opportunities to grow, and when they arise we take them on aggressively to achieve personal growth and growth of Altech.



# TOTAL SOLUTION

Constantly taking on challenges in new fields and providing long-term total solutions while merging accumulated knowhow and analyzed market data with advanced technology



## Information Management

### Automated Society / Information Technology

In Smart card/RFID label and e-SIM where technological innovations are continuing, we offer solutions for ID card and passport manufacturing, EMVCo credit card payment (which has become the international standard), wireless charging, and solutions that evaluate hardware security.



## Beverage System

### Indispensable to PET bottle manufacture

We offer dies for blow molding machines used for PET bottle manufacture, leak testers, ultrasonic defoamers, and various measuring and other equipment that is indispensable in processes in which high-quality PET bottles are manufactured, to support the manufacture/production of beverages.



## Digital Printer

### From Imagination to Reality

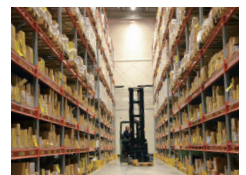
The range of 3D printer customers is expanding into diverse fields including automotive, consumer electronics, toys, medical care and educational institutions. In addition to the main full-color/production 3D printers, we offer a wide range of 3D printers such as 3D printers for large-scale parts and metal 3D printers, to meet customer needs. We also offer 3D printing services.



## Logistics System

### Eliminating Manpower Shortages

For logistics/manufacturing worksites, the shortage of labor and manpower due to the declining birth rate and aging population, along with improvements in operational streamlining, are serious issues. We offer new labor-saving and unmanned solutions specialized for optimization of logistics and manufacturing sites, in the form of service robots and automation systems that work in place of people.



# We are a specialized trading company that imports the most advanced machinery and equipment from Europe and the United States to support Japanese manufacturing

Altech started out by introducing industrial machinery and equipment in the printing and packaging industries that incorporated the most advanced technology in Europe and the United States, then it expanded the products fields it dealt with in accordance with changes in the market environment and diversifying customer needs.

Now we have added a wide range of machinery and equipment to our lineup of products, including equipment related to IC cards and RFID tags, nanotechnology-related equipment, plastic/rubber molding machines, 3D printers, pharmaceutical filling equipment, food processing machinery, cosmetics-related equipment, water treatment equipment, logistics system and service robots.

## TRADING BUSINESS



### Printing and Packaging

#### Significant role to identify the product image

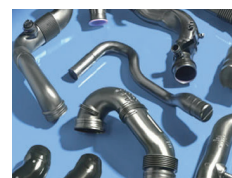
We are dedicating to support printing & packaging market by supplying high end flexographic & rotogravure printing machines and film laminators. We also offer converting equipment for producing various types of plastic and laminate tubes.



### Polymer Process

#### Lightweighting for Future

Our business fields are film/sheet manufacturers for packaging, automotive, and many other industries, which look for high-function, lightweight and environmental friendliness with polymer materials such as synthetic resin and rubber. To meet the business trends and demand which change quickly in the market, we keep proposing latest technology, products, and machinery specializing mixing, extrusion, and related process on those continuously evolved materials with our worldwide network.



### Life Science

#### Supporting Everyday Life

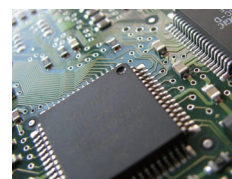
We import-from Europe, the Americas and Asia-equipment related to the manufacture of items indispensable in daily life such as food, medicines, medical care, cosmetics and water treatment, and offer it for sale. We offer state-of-the-art technology that solves both problems related to costs and those that our customers are facing.



### Advanced Systems

#### Next-Generation Process of Attention

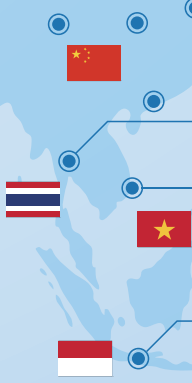
We are offering a variety of innovative systems and solutions such as ultrasonic spray and photonic sintering system and more, with a focus on some important industrial processes where our leading edge technologies, related to both nanotechnology and printed electronics, are typically applied; like thin film deposition, coating, curing, sintering, inspection & evaluation and so on, gathering high hopes for the future market due to their innovative and novel technologies designed to head for "next-generation" .





## Network of Overseas Bases Centering on Asia

The Altech Group supports the business development of customers, with Japan, China and ASEAN countries as the key regions, by offering a total service that emphasizes quality with a reliable and speedy response through cooperation among each of our bases.



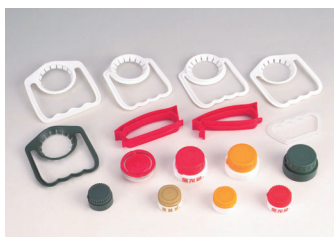
## PRODUCTION BUSINESS



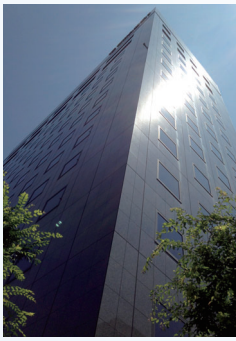
### Preform · Cap

#### Cleanliness / Safety / Peace of Mind

We manufacture and sell preforms for heat-resistant PET bottles for beverages, preforms for PET bottles for aseptic filling, preforms for PET bottles for cooking oils, PE caps and other items. With four production bases in what has become the huge consumer market of China – in Suzhou, Guangzhou, Chongqing and Wuhan – and one in Fukui, Japan, we recognize the needs of the market and our customers and pursue all the possibilities of plastic molding. We will continue to provide high-quality products under the motto “cleanliness, safety and peace of mind” .



# Base in Japan



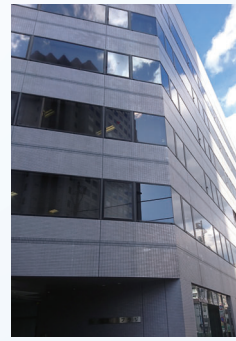
## Headquarters

Sumitomo Irifune Bldg 2F,  
2-1-1 Irifune, Chuo-ku,  
Tokyo 104-0042, Japan  
TEL : +81-3-5542-6760  
FAX : +81-3-5542-6767



## Osaka Business Office

Shin-Osaka Trust Tower 12F,  
3-5-36 Miyahara,  
Yodogawa-ku, Osaka-shi  
Osaka 532-0003, Japan  
TEL : +81-6-4807-0941  
FAX : +81-6-4807-0548



## Technical Division

Toyo-cho ML PLAZA 1F,  
7-5-8 Toyo, Koto-ku,  
Tokyo 135-0016, Japan  
TEL : +81-3-5542-6771  
FAX : +81-3-5542-6770

# Bases for the group companies

## JAPAN



● Altech New Materials Co., Ltd.



● Altech New Power Co., Ltd.

## THAILAND (Bangkok)



● ALTECH ASIA PACIFIC CO., LTD.

## VIETNAM (Ho Chi Minh)



● ALTECH ASIA PACIFIC VIETNAM CO., LTD.

## INDONESIA (Jakarta)



● PT. ALTECH ASIA PACIFIC INDONESIA

## CHINA



● Altech New Materials (Suzhou) Co., Ltd.



● Altech New Materials (Guangzhou) Co., Ltd.



● Chongqing Altech New Materials Co., Ltd.



● Altech New Materials (Wuhan) Co., Ltd.



# PICKUP PRODUCTS

Responding to changes in the market environment and diversification of customer needs

## High end flexographic printing presses


(BOBST)

 Printing and Packaging



## Laminate/Plastic tubing manufacturing lines


(Packsys Global)

 Printing and Packaging



## Self Driving Vehicles

(OTTO Motors Driven by Clearpath Robotics)

 Logistics Systemckaging



## Plastic processing machines

(Labtech Engineering)

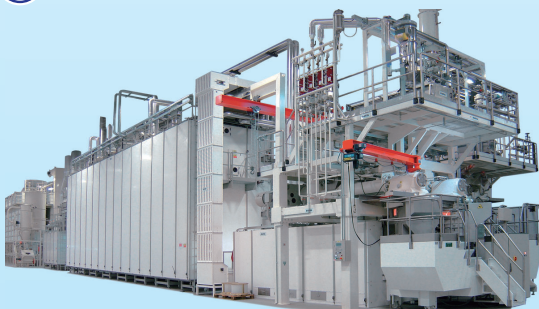
 Polymer Process



## Pasta manufacturing machines

(Fava)

 Life Science



## Water treatment equipment

(Amiad)

 Life Science



## RFID manufacturing / inspecting system, Contact/Contactless Smart cards and terminal test tools

(Muehlbauer · Voyantic · Micropross)

 Information management



RFID manufacturing system




RFID inspecting system



Contact/Contactless Smart cards and terminal test tools

## Photonic sintering / UV irradiation curing system


(Xenon)

 Advanced System



## Ultrasonic spray thin-film coating system

(Sono-tek)

 Advanced System



## Professional-use 3D printers

(Stratasys · Massivit · MakerBot · Desktop Metal)

 Digital Printer



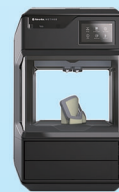
Polyjet type 3D printer



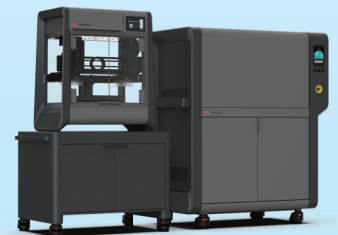
FDM type 3D printers



3D printers for large-scale parts



Desktop type 3D printers



Metal 3D printers



# COMPANY PROFILE

## Overview

Company Name	Altech Co., Ltd.
Headquarters	Sumitomo Irifune Building 2F, 2-1-1 Irifune, Chuo-ku, Tokyo 104-0042, Japan TEL : +81-3-5542-6760
Established	May 15, 1976
Capital*	5,527 million yen
President & CEO	Toshishige Ikeya
Number of Employees*	138 (Altech Co., Ltd.) 402 (Consolidated Basis)
Number of Affiliated*	11 (Subsidiaries) 1 (Affiliates)
Company	Osaka Business Office
Domestic Base	Tokyo Technical Center Altech New Materials Co., Ltd. BAIFUN-ALTECH Co., Ltd. Altech New Power Co., Ltd.
Overseas Bases	Altech New Materials (Suzhou) Co., Ltd. Altech New Materials (Guangzhou) Co., Ltd. Chongqing Altech New Materials Co., Ltd. Altech New Materials (Wuhan) Co., Ltd. ALTECH ASIA PACIFIC CO., LTD. PT. ALTECH ASIA PACIFIC INDONESIA ALTECH ASIA PACIFIC VIETNAM CO., LTD.

\*as of Aug. 31, 2021

## History

May	1976	Altech Co., Ltd. was established with capital of 30 million yen at 4-5, Hatchobori 1-chome, Chuo-ku, Tokyo, with the aim to import and sell industrial machinery.
May	1994	Registered stocks as an over-the-counter stock to Japan Securities Dealers Association.
September	1998	Listed in the Second Section of the Tokyo Stock Exchange.
October	1999	Established Alpallet Co., Ltd.
May	2000	Listed in the First Section of the Tokyo Stock Exchange.
May	2002	Established Altech Asia Pacific Co., Ltd in Thailand
June	2002	Established Altech New Materials (Suzhou) Co., Ltd.
December	2003	In line with transformation to the holding company system, divided business groups into five subsidiaries.
February	2004	Established Altech New Materials (ShenZhen) Co., Ltd.
March	2004	Established Altech New Materials (Guangzhou) Co., Ltd.
March	2008	Absorbed subsidiaries and introduced an operational headquarters system.
August	2010	Moved the Osaka Business Office to 3-5-36 Miyahara, Yodogawa-ku, Osaka-shi, Osaka.
August	2011	Established PT. Altech Asia Pacific Indonesia.
October	2011	Moved the Head Office to 2-1-1 Irifune, Chuo-ku, Tokyo.
August	2012	Acquired ISO9001 and ISO14001 accreditations.
August	2013	Established Chongqing Altech New Materials Co., Ltd.
November	2014	Alpallet Co., Ltd. changed its trading name to Altech New Materials Co., Ltd.
November	2014	Established Altech New Materials (Wuhan) Co., Ltd.
January	2015	Established Altech Asia Pacific Vietnam Co., Ltd. in Vietnam.
April	2020	Established BAIFUN-ALTECH Co., Ltd.
August	2021	Established Altech New Power Co., Ltd.



Sumitomo Irifune Bldg 2F, 2-1-1 Irifune, Chuo-ku, Tokyo 104-0042, Japan  
TEL: +81-3-5542-6760 / FAX: +81-3-5542-6767

<http://www.altech.co.jp>

